

SPECIFICATION

Pad Thickness	: 0.4mm
Configured Voltage	: 12V, 24V, 110V, 230V, 50 - 60Hz
Average Temperature Rise	: 10 - 15deg C above room temperature
Wattage	: 200 watts / m2
Self-adhesive strength	: 0.5kgs/cm2
Self Adhesive Backing	: For ease of installation
Heating Conductor	: Enameled wire
Cable Lead	: 0.5mm two core and 80cms length.
Terminal Block	: 30x30x5mm
Insulation Material	: PET

RECTANGLE SHAPE

Sizes Available	Model No	Nominal Watts
300 x 300mm	RE3030	14
300 x 600mm	RE3060	29
400 x 600mm	RE4060	40
400 x 800mm	RE4080	55
500 x 500mm	RE5050	42
500 x 800mm	RE5080	70
600 x 600mm	RE6060	63
600 x 900mm	RE6090	96
800 x 800mm	RE8080	104
960 x 960mm	RE9696	152
700 x 1100mm	RE70110	126
800 x 1200mm	RE80120	159
800 x 1500mm	RE80150	200
900 x 1400mm	RE90140	211
960 x 1500mm	RE96150	242

ROUND SHAPE

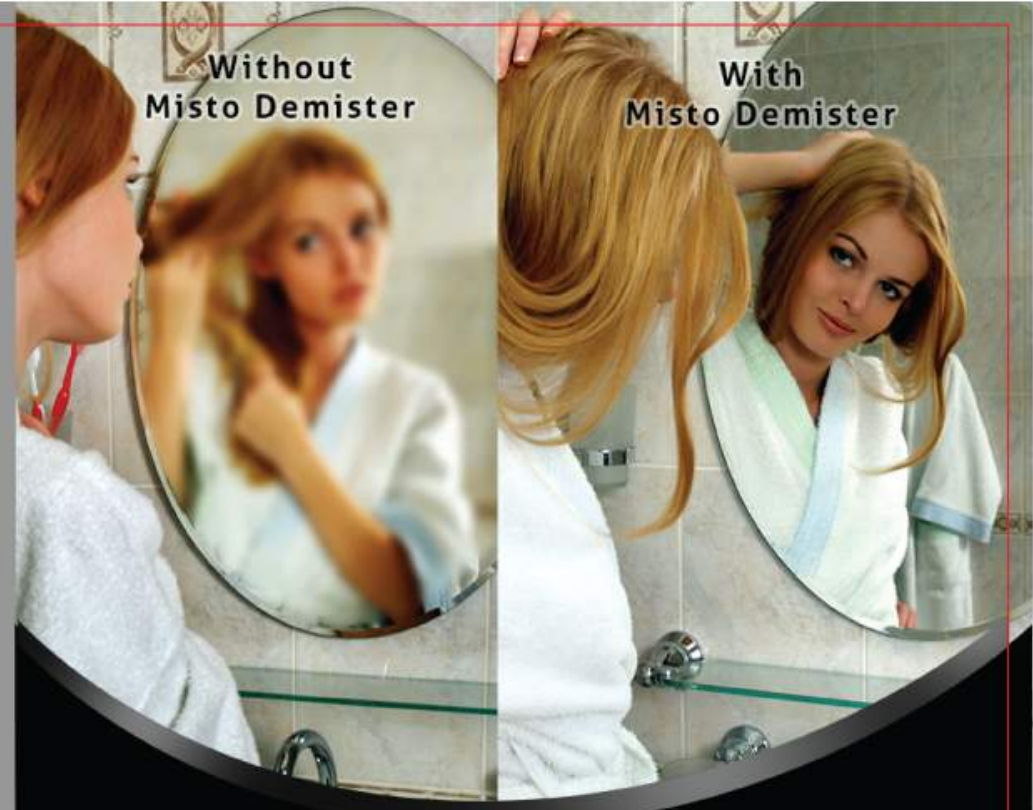
Sizes Available	Model No	Nominal Watts
350mm dia	RO35	15
400mm dia	RO40	23
500mm dia	RO50	36
600mm dia	RO60	53
700mm dia	RO70	72

OVAL SHAPE

Sizes Available	Model No	Nominal Watts
300 x 400mm	OV3040	17
400 x 600mm	OV4060	35
500 x 700mm	OV5070	52
600 x 800mm	OV6080	71
600 x 900mm	OV6090	80

Without
Misto Demister

With
Misto Demister



MISTO Mirror Demister

- ✓ The only solution for foggy mirrors.
- ✓ Simple to install & easy to use.
- ✓ No transformers or thermostats necessary.
- ✓ No maintenance required.
- ✓ Fitted in leading hotels worldwide.
- ✓ 5 years international warranty.



SRK Building Supplies LLC
P.O. Box 236294
Dubai - UAE

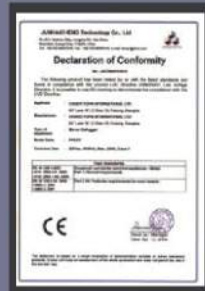
+971 4 2639833
+971 4 2639834
srksupplies@gmail.com

Misto mirror demister is a technologically advanced, safe and simple solution for steamed up bathroom mirrors.

This demister is an ultra-thin self-adhesive pad which enables simple and easy installation directly onto the back of any mirror. Misto is normally connected to the main lighting circuit so that it is activated only when the bathroom lights are switched on. It can also be connected to a separate switch altogether or alternatively to any mirror lights. On being activated or turned on, Misto will warm up the mirror in about 2-3 minutes and remove all condensation or water vapor present on the mirror. Once fitted, Misto will never allow the mirror to steam up in or around the area of the pad. It is developed specially for foggy bathroom mirrors since more than 20 years ago.

Features and Benefits

- ✓ Ultra thin film which fixes easily on any mirror, new or existing.
- ✓ Self adhesive for easy installation.
- ✓ It can easily be connected to the existing room light circuit for automatic operation when the light is switched on/off.
- ✓ 100% effective in about 2 – 3 minutes.
- ✓ Multiple pads can be installed on a single mirror. Kindly refer to installation instructions.
- ✓ Very low energy consumption.
- ✓ Available in various voltages (12V, 24V, 110V, 230V), shapes (round, oval or rectangular) and numerous sizes.
- ✓ No transformers or thermostats required.
- ✓ Misto demisters are double insulated and are designed to spread warmth evenly across the entire surface of the mirror.
- ✓ Very economical to use – running cost are almost negligible.
- ✓ Resistant to moisture, vibration and ageing.
- ✓ Ideal for hotels, residences, furnished apartments, villas, hospitals, community centers, health spas, etc.
- ✓ 5 years warranty against any manufacturing defect.
- ✓ Tested and approved by leading agencies.



Installation of Misto Demister

General Notes

- ✓ Please consult a qualified electrician before installing the pad.
- ✓ Misto heating pads are self-adhesive and should always be in direct contact with the mirror.
- ✓ The heating pad should not be cut, pierced or damaged in any way.
- ✓ The mirror should be flat across its entire surface.
- ✓ Allow approx 1mm gap all around for mirror expansion when fitted into a wall recess.

Adhering Misto Demister to the mirror

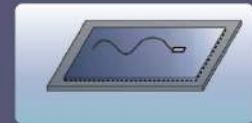
Misto are self-adhesive heating pads that can be fixed on any 3mm – 6mm thick mirror. During installation, if air bubbles appear between the pad and the mirror, the pad should not be pierced to release the air, as this will damage the insulation of the pad. These bubbles formed are only due to improper handling and will not affect the functioning or operation of the pad.



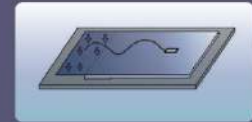
The mirror should be placed flat down on a protective cushioned surface. Clean the back of the mirror and make sure it is clean, dry, and free on any contaminations.



Mark the position of heating pad with a pencil on the back of the mirror.



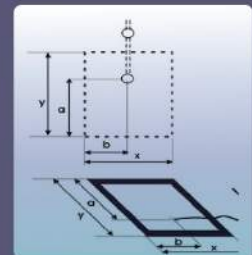
Remove approx. 10cms of the self-adhesive film of the pad and fold it backwards. Stick the open part of the pad to the marked outline edge on the mirror. Using a dry cloth, press the pad onto the back of the mirror.



Slowly peel the self-adhesive film by pressing and rubbing the pad onto the back of the mirror with a dry cloth. It is easier when 2 people are carrying out the installation.



Mark the location of the mirror on the wall along with the power cord.



Prepare a 50-60mm diameter hole in the wall surface in the location of the power cord so that the mirror rests flat on the wall.

Fix the mirror on the wall.

If in doubt, contact a qualified electrician.